

PART OF THE N. 1/2 OF SECTION 22, T.7N., R.1E., S.L.B. & M.  
**WOLF CREEK SUBDIVISION NO. 2**

IN WEBER COUNTY

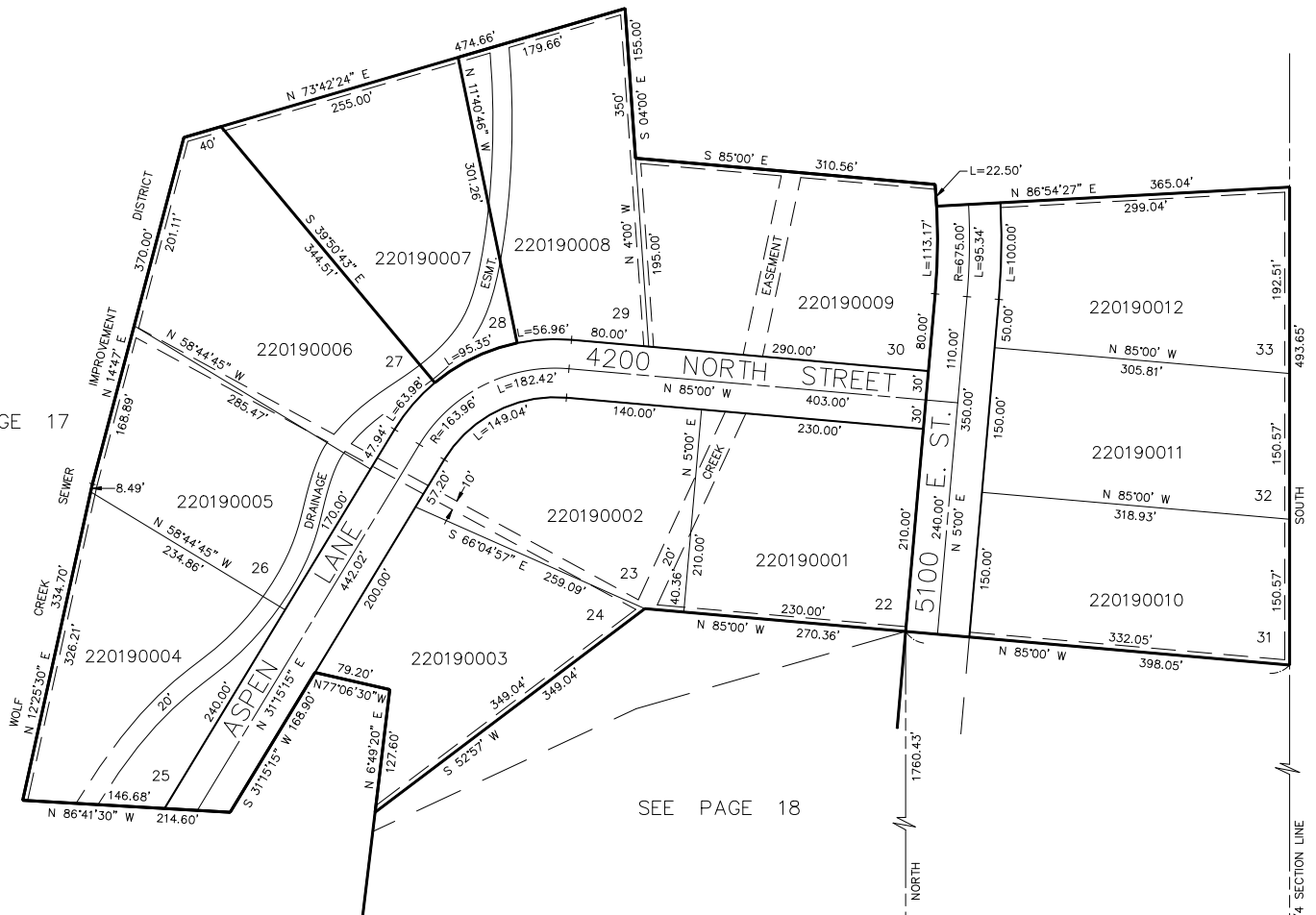
TAXING UNIT: 203, 317

SCALE 1" = 100'

19

SEE PAGE 17

SEE PAGE 17



SEE PAGE 16

SEE PAGE 18

5' UTILITY & DRAINAGE EASEMENTS  
 EACH SIDE OF PROPERTY LINES AS  
 INDICATED BY DASHED LINES EXCEPT  
 AS OTHERWISE SHOWN.

S.W. CORNER OF THE  
 N.W. 1/4 OF SEC. 22  
 T.7N., R.1E., S.L.B. & M.

FOR COMPLETE ENG DATA SEE  
 ORIGINAL DEDICATION PLAT IN  
 BOOK 15, PAGE 71 OF RECORDS.